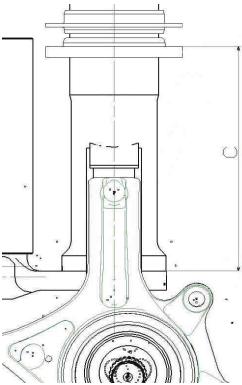
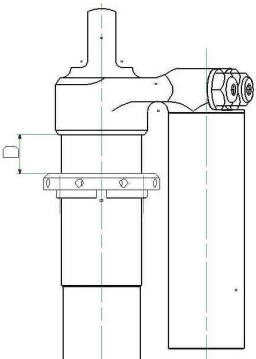


**CITROËN**  
RACING

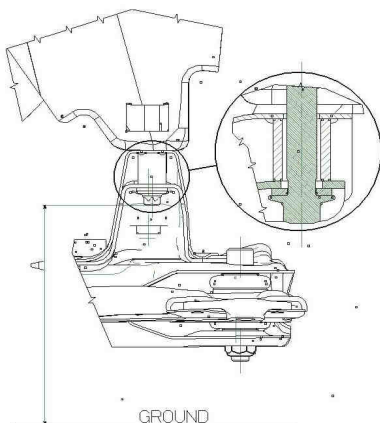
Front spring cup measurement



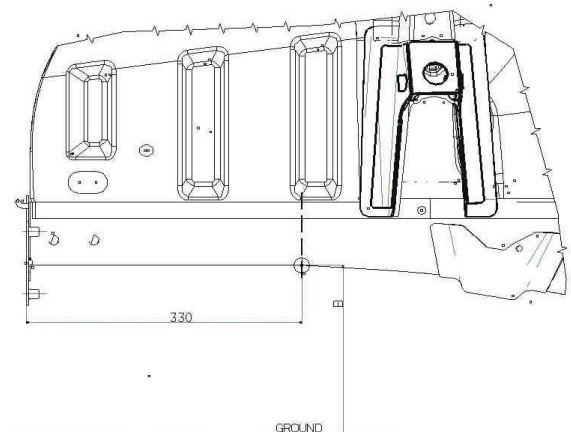
Rear spring cup measurement



Front ride height measurement



Rear ride height measurement



# C2R2MAX

## SETUP Sheet

Event	Car N°(chassis)		R2 Max		<b>TARMAC SET-UP "WET CONDITIONS"</b>
Date	Surface		Tarmac		
Crew	Weather conditions		wet		

General informations									
DIMENSIONS	Rims	6,5 x 16		Setup pressure		bars	2	Target (*)	
	Tyres	BF Goodrich 195/50-16						Front : 2,4 bars	
									Rear : 2,2 bars
	(*) : The target means a tyre pressure just at the end of a 15kms long special stage.								
	Weight balance per wheel (with 20L)	kg	Front L		Front R	Ballast detail		Weight on front	%
		kg	Rear L		Rear R		Delta L/R	Kg	
		kg	Driver		Navigator		Diago delta.	Kg	
	Total weight	kg			1180 min	Balast	Kg		
	Total weight without crew	kg			1030 min				

Front axle specification									
SUSPENSION	Main spring	daN/mm	5						
	Intermediate spring	daN/mm	0,4						
	Shock absorber	spec	ABO-RA-070097		Pressure	bars	12	Clips base (c / C / D)	-11 / -15 / -12
	Shock setting		Hydraulic bump stop			-15	Clips		
	Anti roll bar	mm	ø 20 full						
	Anti roll bar link length	mm	Left		285 mm (the second has to be adjusted)			Right	
	Wheel spacer	mm	Left		No			Right	
GEOMETRY	Ride height (A)	mm	Left		240mm, subframe bolt			Right	
	Distance between spring cup	mm	Left		1 rev => 1,5 mm ride height			Right	
	Toe "in"	mm	Left		0 mm total, toe in on brakes			Right	
	Camber	°/"	Left		2°30'			Right	
	Steering joint ball length	mm	Left		1 rev => 4,8 mm at the wheel			Right	
	Caster	°/"	Left					Right	

Rear axle specifications									
SUSPENSION	Main Spring	daN/mm	3,7						
	Intermediate spring	daN/mm	0,5		S1600 spec				
	Shock absorber	spec	ABO-RA-070079		Pressure	bars	12	Clips base (c / C / D)	-15 / -15 / -15
	Shock setting		Hydraulic bump stop			-1,5 revs	Clips		
	Rear axle crossmember	mm	5/26 full						
	Wheel spacer	mm	Left		No			Right	
GEOMETRY	Ride height (B)	mm	Left		360mm on rear body cross member			Right	
	Spring cup measurement (D)	mm	Left		1 rev => 2 mm ride height			Right	
	Wheel base with crew	mm	Left					Right	
	Toe in	mm	Left		5 mm "in" Total			Right	
	Toe in shim	°/"	Left		"- " means less toe in			Right	
	Camber	°/"	Left		1°45'			Right	
	Camber shim	°/"	Left		"- " means less camber			Right	

Braking specifications									
BRAKES	Caliper (Piston Ø / nb)	mm	Left	44 / 40	4 pistons	31,8	2 pistons	Rear	
	Diameter / Thickness (bd new)	mm	Left	302 / 26		280 / 8		Rear	
	Pads (Mark / model)	spec	Left	Pagid / RS 15		FERODO DS3000		Rear	
	Master cylinder (Ø)	inch	Principal	22 mm		Without servo		0.700"	HB
	Rear brake pressure limiter	spec		Bendix		Cutting	bars		
Steering specifications									
STE	Steering rack	spec	BCSP4000ZN, CITROËN Racing shop						
	Steering rack height setting	mm	Left						Rear
	Power steering pump	spec	BCSP4007ZX CITROËN Racing shop					Ø Caliber	Following driver
Gearbox specifications									
GEAR	Gears	12 x 36	16 x 34	17 x 28	20 x 27	21 x 24			
	Final ratio (speed in accordance)	13x54 (long, 195km/h)	12x53 (medium, 183km/h)	12x57 (short, 171km/h)					
	Differential	Accel	30	Deccel	90	Preload	9 m.daN	quadridisque	

**IMPORTANT :** By the "R" rules, the F.I.A limits the low ride height. Please, check the page 1 and 2 of the 28/02 VR2B sheet to know the measurement values, and how / where measuring it.



# C2R2MAX



## Weight balance setup sheet

### Configuration conditions :

20 liters of fuel in the tank.  
1 only spare wheel  
4 wheels equipped with brand new racing tyres P = 2 bars.  
Inboard tool set installed (tools, jack, makita, spare parts)  
Front anti-roll bar disconnected  
Driver (helmet, shoes,...) installed.  
Co-driver (helmet, shoes,...) installed.

### R2 Homologation weight :

**1030 kg** without crew  
**1180 kg** with the crew

### Ballast :

### Sump guard :

### Inside :

**FRONT AXLE WEIGHT TARGET : LESS THAN 1 KG**

**Example :** Left front wheel 364 kg / Right front wheel 363,5 kg

Front Left	
Mass	Kg
Ride Height	
Target (A)	mm
Measure (A)	mm
Spring cup measurement	
Measure (C)	mm



Front Right	
Mass	Kg
Ride Height	
Target (A)	mm
Measure (A)	mm
Spring cup measurement	
Measure (C)	mm

Rear Left	
Mass	Kg
Ride Height	
Target (B)	mm
Measure (B)	mm
Spring cup measurement	
Measure (D)	mm

Rear Right	
Mass	Kg
Ride Height	
Target (B)	mm
Measure (B)	mm
Spring cup measurement	
Measure (D)	mm

**REAR AXLE WEIGHT TARGET : LESS THAN 5 KG**

**Example :** Rear left wheel 228 kg / Rear right wheel 224 kg

### Front ride height measurement

### Front spring cup measurement

### Rear ride height measurement

### Rear spring cup measurement

